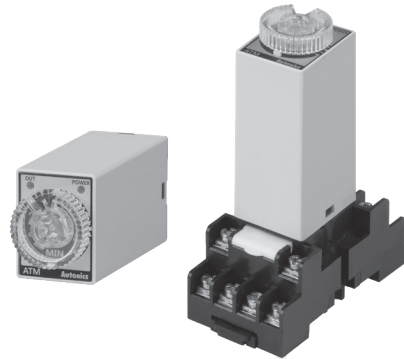


## W21.5×H28mm Miniature Timer

### ■ Features

- Miniature Size (W21.5×H28×L59.3mm)
- 4c (4PDT) contact (250VAC, 3A)
- High precise time control
- Easy time setting using dial
- Various time ranges
  - : 0.1 sec to 3 hour (11 time ranges, different by models)
- Power supply
  - ATM4-2: 24VDC
  - ATM4-5: 220VAC 50/60Hz
  - ATM4-6: 110VAC 50/60Hz



Mounting My socket (sold separately)

### ■ Ordering Information

|            |          |          |          |           |          |                        |
|------------|----------|----------|----------|-----------|----------|------------------------|
| <b>ATM</b> | <b>4</b> | <b>—</b> | <b>5</b> | <b>10</b> | <b>S</b> |                        |
|            |          |          |          |           |          | Time unit              |
|            |          |          |          |           |          | Time range             |
|            |          |          |          |           |          | Power supply           |
|            |          |          |          |           |          | Output                 |
|            |          |          |          |           |          | Item                   |
|            |          |          |          |           | S        | Sec (1, 5, 10, 30, 60) |
|            |          |          |          |           | M        | Min (3, 5, 10, 30, 60) |
|            |          |          |          |           | H        | Hour (3)               |
|            |          |          |          |           | Number   | Max. time range        |
|            |          |          |          |           | 2        | 24VDC                  |
|            |          |          |          |           | 5        | 220VAC 50/60Hz         |
|            |          |          |          |           | 6        | 110VAC 50/60Hz         |
|            |          |          |          |           | 4        | 4c (4PDT)              |
|            |          |          |          |           | ATM      | Miniature Analog Timer |

### ■ Specifications

| Model                                    | ATM4 - 2□S<br>2□M<br>23H  | ATM4 - 5□S<br>5□M<br>53H | ATM4 - 6□S<br>6□M<br>63H |
|--|---|--------------------------|--------------------------|
| Function                                 | Power ON Delay  |                          |                          |
| Control time setting range <sup>※1</sup> | 0.1 sec to 3 hour   |                          |                          |
| Power supply                             | 24VDC <sup>≡</sup>  | 220VAC~ 50/60Hz          | 110VAC~ 50/60Hz          |
| Allowable voltage range                  | 21.6-26.4VDC <sup>≡</sup>   | 200-230VAC~ 50/60Hz      | 100-120VAC~ 50/60Hz      |
| Power consumption                        | Approx. 1.2W  | Approx. 3VA              | Approx. 3VA              |
| Return time                              | Max. 100ms  |                          |                          |
| Timing operation                         | Power ON Start  |                          |                          |
| Control output                           | Contact type 4PDT (4c)  |                          |                          |
|  | Contact capacity 250VAC~ 3A, 24VDC <sup>≡</sup> 3A resistive load                                       |                          |                          |
| Relay life cycle                         | Mechanical Min. 10,000,000 operations   |                          |                          |
|  | Electrical Min. 200,000 operations  |                          |                          |
| Repeat error                             | Max. ±0.5% ±10ms  |                          |                          |
| SET error                                | Max. ±10% ±50ms   |                          |                          |
| Voltage error                            | Max. ±0.5% ±10ms  |                          |                          |
| Temperature error                        | Max. ±2% ±10ms  |                          |                          |
| Insulation resistance                    | Over 100MΩ (at 500VDC megger)   |                          |                          |
| Dielectric strength                      | 3,000VAC 50/60Hz for 1 min  |                          |                          |
| Noise immunity                           | ±2kV the square wave noise (pulse width: 1μs) by noise simulator  |                          |                          |
| Vibration                                | Mechanical 0.75mm amplitude at frequency of 10 to 55Hz (for 1 min) in each X, Y, Z direction for 1 hour |                          |                          |
|  | Electrical 0.5mm amplitude at frequency of 10 to 55Hz (for 1 min) in each X, Y, Z direction for 10 min  |                          |                          |
| Shock                                    | Mechanical 300m/s <sup>2</sup> (approx. 30G) in each X, Y, Z direction 3 times                          |                          |                          |
|  | Electrical 100m/s <sup>2</sup> (approx. 10G) in each X, Y, Z direction 3 times                          |                          |                          |
| Environment                              | Ambient temperature -10 to 50°C, storage: -25 to 65°C   |                          |                          |
|  | Ambient humidity 35 to 85%RH, storage: 35 to 85%RH  |                          |                          |
| Weight <sup>※2</sup>                     | Approx. 48g (approx. 42g)   |                          |                          |

※1: Refer to time specifications for control time setting range by model.

※2: The weight includes packaging. The weight in parenthesis is for unit only.

※Environment resistance is rated at no freezing or condensation.

SENSORS

CONTROLLERS

MOTION DEVICES

SOFTWARE

(J) Temperature Controllers

(K) SSRs

(L) Power Controllers

(M) Counters

(N) Timers

(O) Digital Panel Meters

(P) Indicators

(Q) Converters

(R) Digital Display Units

(S) Sensor Controllers

(T) Switching Mode Power Supplies

(U) Recorders

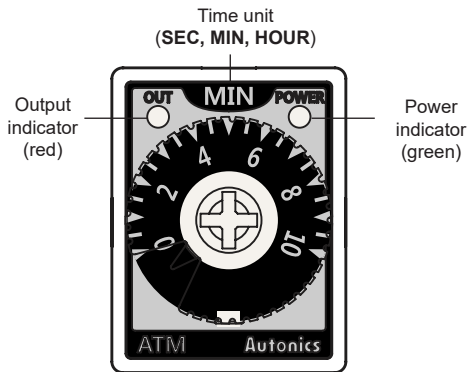
(V) HMIs

(W) Panel PC

(X) Field Network Devices

# ATM Series

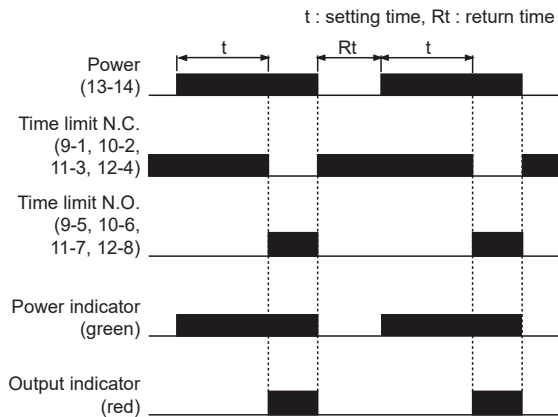
## Unit Descriptions



## Time Specifications

| Model     | Time unit | Time setting range |
|-----------|-----------|--------------------|
| ATM4-□1S  | SEC       | 0.1 to 1 sec       |
| ATM4-□5S  |           | 0.5 to 5 sec       |
| ATM4-□10S |           | 1 to 10 sec        |
| ATM4-□30S |           | 3 to 30 sec        |
| ATM4-□60S |           | 6 to 60 sec        |
| ATM4-□3M  | MIN       | 0.3 to 3 min       |
| ATM4-□5M  |           | 0.5 to 5 min       |
| ATM4-□10M |           | 1 to 10 min        |
| ATM4-□30M |           | 3 to 30 min        |
| ATM4-□60M | HOUR      | 6 to 60 min        |
| ATM4-□3H  |           | 0.3 to 3 hour      |

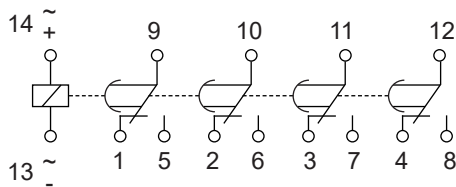
## Operation Specifications



## Connections

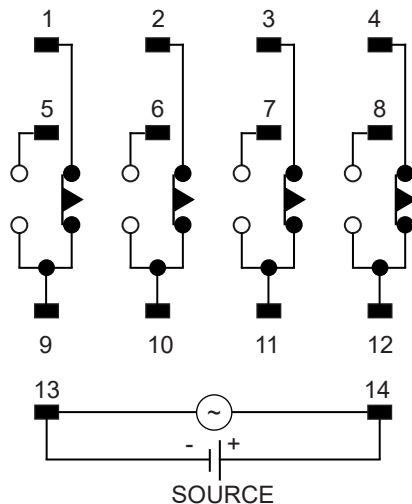
|         |          |                                       |
|---------|----------|---------------------------------------|
| SOURCE  | ATM4-2□□ | 24VDC 1.2W                            |
|         | ATM4-5□□ | 200-230VAC 50/60Hz 3VA                |
|         | ATM4-6□□ | 100-120VAC 50/60Hz 3VA                |
| CONTACT |          | 250VAC 3A, 24VDC 3A<br>RESISTIVE LOAD |

### IEC marking



※IEC marking is on the unit.

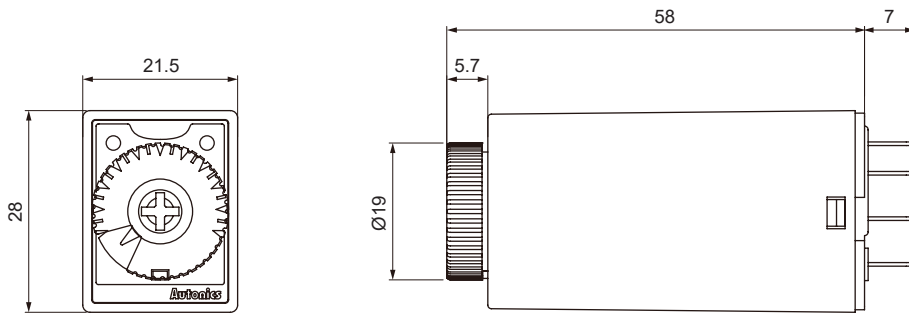
### NEMA marking



# Miniature Analog Timer

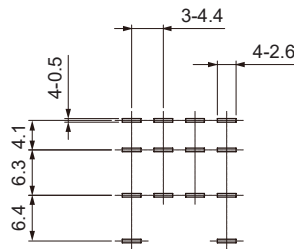
## ■ Dimensions

(unit: mm)



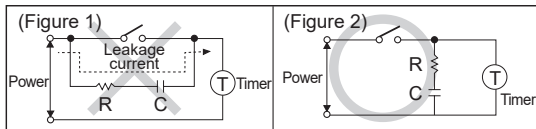
※Use My socket which is commercially available.

## ◎ Pin arrangement



## ■ Proper Usage

- Follow instructions in 'Proper Usage'. Otherwise, it may cause unexpected accidents.
  - 24VDC power supply should be insulated and limited voltage/current or Class 2, SELV power supply device.
  - When supplying or turning off the power, use a switch or etc. to avoid chattering.
  - Install a power switch or circuit breaker in the easily accessible place for supplying or disconnecting the power.
  - In order to avoid leakage current flowing, connect resistance and condenser as (Figure 2).
- If connect as (Figure 1), it may cause malfunction due to leakage current.



- Keep away from high voltage lines or power lines to prevent inductive noise.  
In case installing power line and input signal line closely, use line filter or varistor at power line and shielded wire at input signal line.  
Do not use near the equipment which generates strong magnetic force or high frequency noise.
- Change setting time, time range, operation mode or etc. after turning off the power of the timer.
- Do not use the unit in the place where flammable/explosive/corrosive gas, humidity, direct sunlight, radiant heat, vibration, impact, or salinity may be present.  
Failure to follow this instruction may result in fire or explosion.
- This unit may be used in the following environments.
  - ① Indoors (in the environment condition rated in 'Specifications')
  - ② Altitude max. 2,000m
  - ③ Pollution degree 2
  - ④ Installation category II

|                |
|----------------|
| SENSORS        |
| CONTROLLERS    |
| MOTION DEVICES |
| SOFTWARE       |

|                                   |
|-----------------------------------|
| (J) Temperature Controllers       |
| (K) SSRs                          |
| (L) Power Controllers             |
| (M) Counters                      |
| (N) Timers                        |
| (O) Digital Panel Meters          |
| (P) Indicators                    |
| (Q) Converters                    |
| (R) Digital Display Units         |
| (S) Sensor Controllers            |
| (T) Switching Mode Power Supplies |
| (U) Recorders                     |
| (V) HMIs                          |
| (W) Panel PC                      |
| (X) Field Network Devices         |